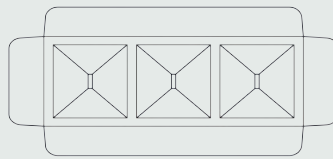
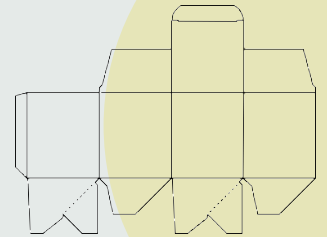




1 x Thank You Card

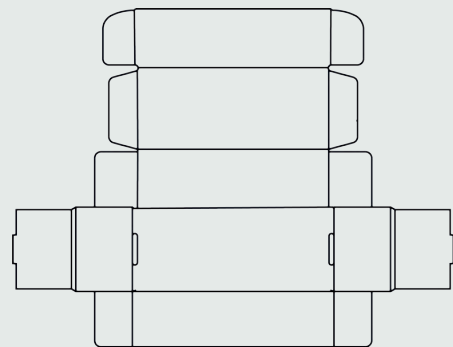
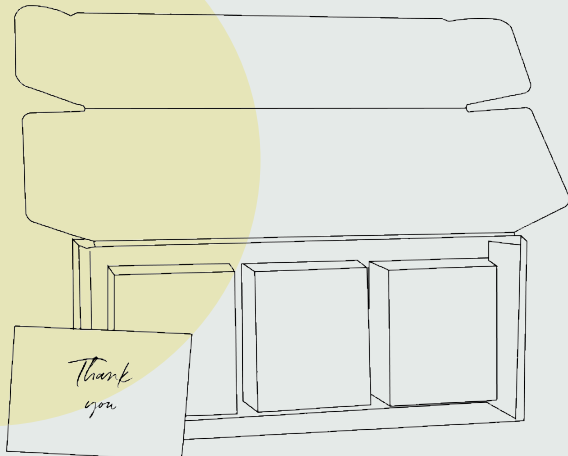


1 x Inner Fitment



3 x Candle Packaging

ARE YOU LOOKING FOR DIRECT TO CONSUMER PACKAGING FOR YOUR CANDLES?



1 x Postal Outer



Are you looking for a complete packaging solution to get your product directly to your customer?

You know that direct to consumer packaging is becoming ever more important as people change their shopping habits. However, it can be daunting to find all the suppliers to provide the necessary elements: postal outer, carton and thank you card.

We can sample, manufacture and supply your postal outers, your cartons and your thank you cards. All under the same roof AND in low quantities.

We can make them beautiful on the inside and secure on the outside for the postal system.

Here is a rough idea of how much it might cost you based on the images above:

<u>For a quantity of 2,000</u>	
1 x Printed (one side) postal outer and internal fitment.	£ 1.25
3 x Printed (one side) cartons.	£ 1.17
1 x Printed (both sides) thank you card.	£ 0.28
Total:	£ 2.70

All jobs are subject to sizes and quantities, but the above is a good indication.

We can also do your graphic design work @ £75 per hour. You can guarantee that the artwork will fit the profiles exactly and print correctly too.

It's so important to get it right from the beginning.

Let us help you get your product to your customer.

Contact:
 Claire Summersby
 csummersby@alexir.co.uk
 creative@alexir.co.uk

